



India Meteorological Department

(Ministry of Earth Sciences)

NATIONAL BULLETIN NO.: 01 (BOB/03/2023)

TIME OF ISSUE: 0900 HOURS IST

DATED: 01.08.2023

FROM: INDIA METEOROLOGICAL DEPARTMENT (FAX NO. 24643965/24699216/24623220)

TO: CONTROL ROOM, NDM, MINISTRY OF HOME AFFAIRS (FAX.NO. 23093750)

CONTROL ROOM NDMA (FAX.NO. 26701729)

CABINET SECRETARIAT (FAX.NO.23012284, 23018638)

PS TO HON'BLE MINISTER FOR S & T AND EARTH SCIENCES (FAX NO.23316745)

SECRETARY, MOES (FAX NO. 24629777)

H.Q. (INTEGRATED DEFENCE STAFF AND CDS) (FAX NO. 23005137/23005147)

DIRECTOR GENERAL, DOORDARSHAN (23385843)

DIRECTOR GENERAL, AIR (23421105, 23421219)

PIB MOES (FAX NO. 23389042)

UNI (FAX NO. 23355841)

D.G. NATIONAL DISASTER RESPONSE FORCE (NDRF) (FAX NO. 26105912, 2436 3260)

DIRECTOR, PUNCTUALITY, INDIAN RAILWAYS (FAX NO. 23388503)

CHIEF SECRETARY, WEST BENGAL (FAX NO. 033-22144328)

CHIEF SECRETARY, ODISHA (FAX NO. 0674-2536660)

CHIEF SECRETARY, ANDHRA PRADESH (FAX NO. 0863-2441029, 08645-246600)

ADMINISTRATOR, ANDAMAN & NICOBAR ISLANDS (FAX NO. 03192- 232656)

Sub: Depression over Northeast Bay of Bengal

Yesterday's well-marked low pressure area over central parts of North Bay of Bengal concentrated into a depression and lay centered at 0530 hours IST of today, the 1st August, 2023 over northeast Bay of Bengal near latitude 20.5°N and longitude 91.5°E about 200 km southeast of Khepupara (Bangladesh) and 430 km east-southeast of Digha (West Bengal) .

It is likely to intensify further into a Deep Depression and move northwestwards and cross Bangladesh coast near Khepupara around evening of today, the 1st August. Thereafter, it is very likely to move west-northwestwards across Gangetic West Bengal during subsequent 24 hours.

Warnings:

(i) Rainfall warning

Odisha: Light to moderate rainfall at most places with isolated heavy to very heavy rainfall on 1st August & 2nd August.

Gangetic West Bengal: Light to moderate rainfall at most places with isolated heavy to very heavy rainfall on 1st and 2nd August.

Jharkhand: Light to moderate rainfall at most places with isolated heavy to very heavy rainfall on 1st and 2nd August.

Chattisgarh: Light to moderate rainfall at most places with isolated heavy rainfall during 1st and 2nd August.

Bihar: Light to moderate rainfall at most places with isolated heavy rainfall during 1st and 02nd August.

(ii) Wind warning

Squally wind speed reaching 45-55 kmph gusting to 65 kmph is prevailing over North & adjoining Central Bay of Bengal and along & off Bangladesh-West Bengal coasts and 40-50 kmph gusting to 60 kmph is prevailing along & off North Odisha coast. It is likely to increase and become 55-65 kmph gusting to 75 kmph over North & adjoining Central Bay of Bengal and along & off West Bengal-Bangladesh coasts during next 12-hours and 45-55 kmph gusting to 65 kmph along & off North

Spatial rainfall distribution: Isolated: <25%, A few: 26-50%, Many: 51-75%, Most: 76-100%

Rainfall amount (mm): Heavy rain: 64.5 – 115.5, Very heavy rain: 115.6 – 204.4, Extremely heavy rain: 204.5 or more.

Odisha coast during the same period. Thereafter, the same wind speed would continue over the above regions for subsequent 12 hours and decrease thereafter.

(iii) Sea Condition: Rough to very rough sea condition is very likely to prevail over North & adjoining Central Bay of Bengal and along & off Bangladesh-West Bengal-North Odisha coasts till forenoon of 2nd August.

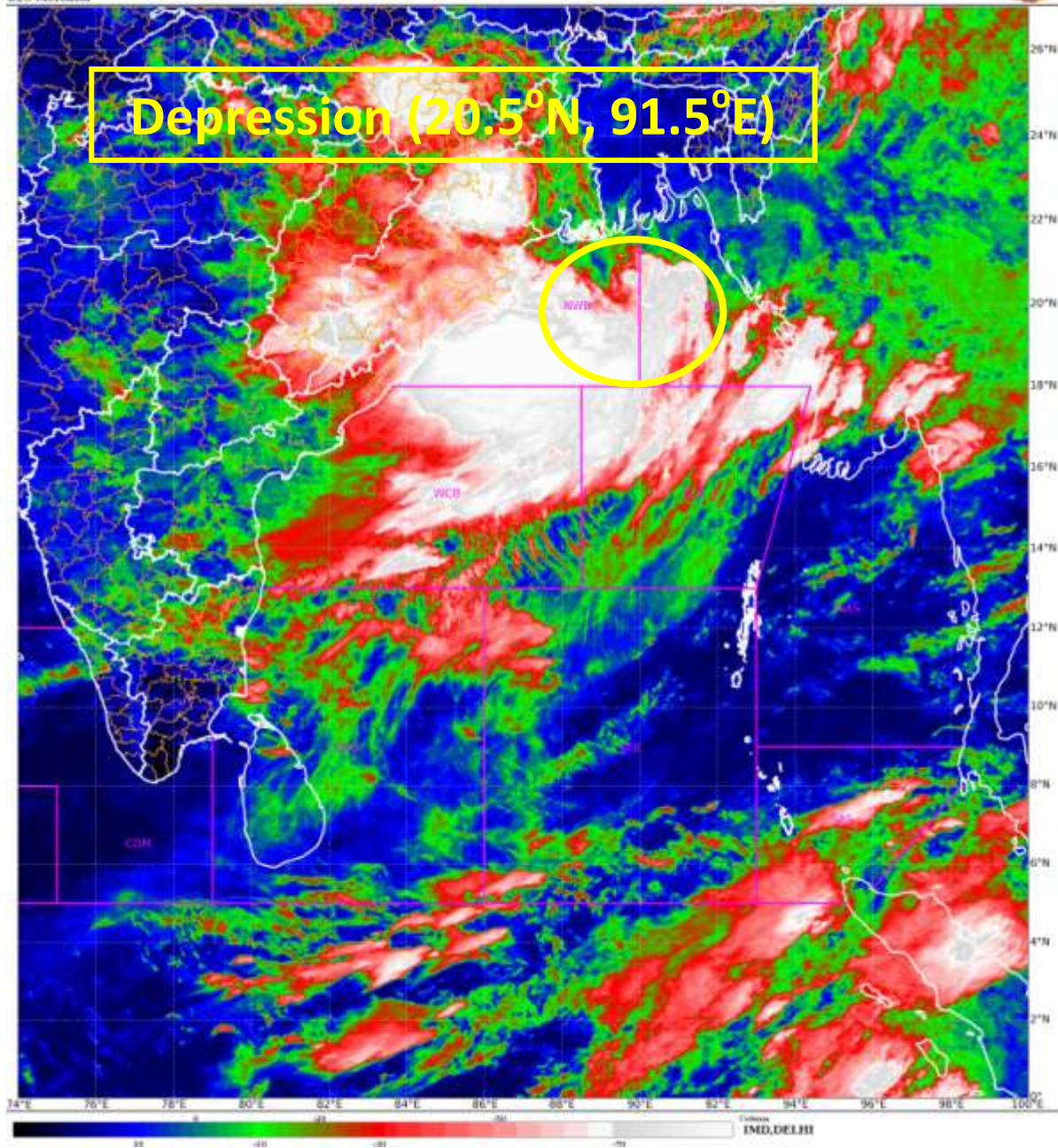
(iv) Fishermen Warning

Fishermen are advised not to venture into North & adjoining Central Bay of Bengal and along & off along & off Bangladesh-West Bengal-North Odisha coasts till forenoon of 2nd August.

The next bulletin will be issued at 1130hrs IST of today, 1st August, 2023.

**(Shashi Kant)
Scientist-D, RSMC, New Delhi**

Copy to: CRS, Pune/ACWC Kolkata/Chennai/CWC Bhubaneswar/CWC Visakhapatnam/MO Port Blair



Spatial rainfall distribution: Isolated: <25%, A few: 26-50%, Many: 51-75%, Most: 76-100%
Rainfall amount (mm): Heavy rain: 64.5 – 115.5, Very heavy rain: 115.6 – 204.4, Extremely heavy rain: 204.5 or more.



OBSERVED AND FORECAST TRACK OF DEPRESSION OVER NORTHEAST BAY OF BENGAL BASED ON 0000 UTC (0530 IST) OF 01ST AUGUST 2023.



DATE/TIME IN UTC
IST=UTC + 0530
L: LOW PRESSURE AREA
WML: WELL MARKED LOW PRESSURE AREA
D: DEPRESSION (17-27 KT)
DD: DEEP DEPRESSION (28-33 KT)
CS: CYCLONIC STORM (34-47 KT)
SCS: SEVERE CYCLONIC STORM (48-63KT)
VSCS: VERY SEVERE CYCLONIC STORM (64-89 KT)
ESCS: EXTREMELY SEVERE CYCLONIC STORM (90-119 KT)
SuCS: SUPER CYCLONIC STORM (\geq 120 KT)

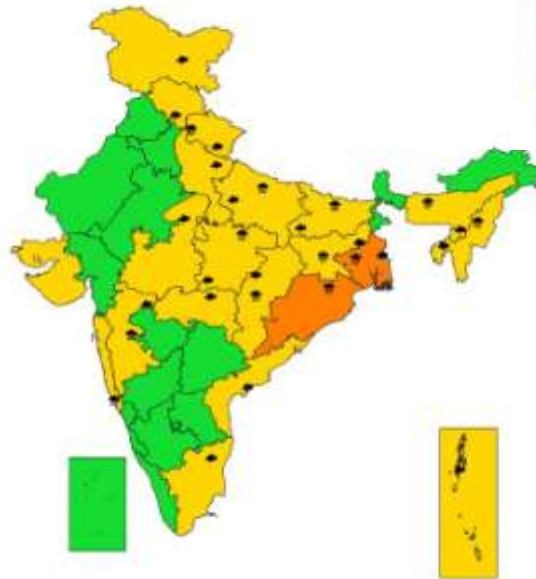
- LESS THAN 34 KT
- 34-47 KT
- \geq 48 KT
- OBSERVED TRACK
- FORECAST TRACK
- CONE OF UNCERTAINTY

Spatial rainfall distribution: Isolated: <25%, A few: 26-50%, Many: 51-75%, Most: 76-100%
Rainfall amount (mm): Heavy rain: 64.5 – 115.5, Very heavy rain: 115.6 – 204.4, Extremely heavy rain: 204.5 or more.



SUBDIVISIONWISE WEATHER WARNING FOR DAY 1
(1-8-2023)

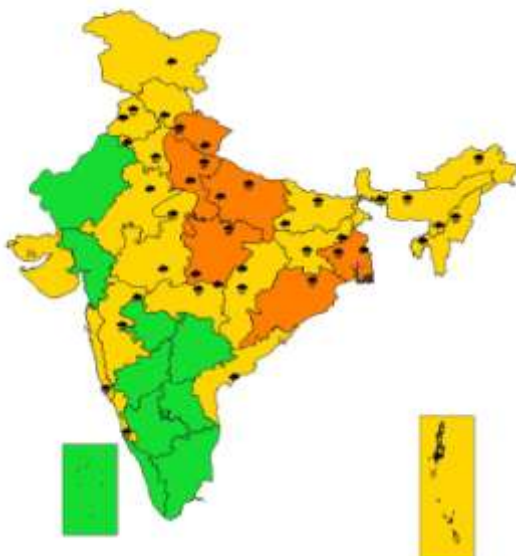
WARNING



- | | | |
|--|---|---|
| <ul style="list-style-type: none"> ☼ Heavy Rain ❄ Heavy Snow ⚡ Thunderstorms & Lightning ☁ Hailstorm | <ul style="list-style-type: none"> ☁ Dust Storm 🌪 Strong Surface Winds 🔥 Heat Wave ❄ Cold wave 🌫 Fog | <ul style="list-style-type: none"> 🟢 NO WARNING 🟡 WATCH(BE UPDATED) 🟠 ALERT (BE PREPARED) 🔴 WARNING (TAKE ACTION) |
|--|---|---|



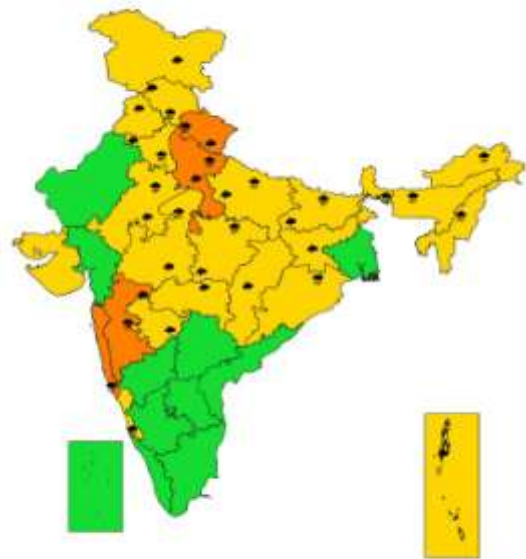
SUBDIVISIONWISE WEATHER WARNING FOR DAY 2
(2-8-2023)



- | | | |
|--|---|---|
| <ul style="list-style-type: none"> ☼ Heavy Rain ❄ Heavy Snow ⚡ Thunderstorms & Lightning ☁ Hailstorm | <ul style="list-style-type: none"> ☁ Dust Storm 🌪 Strong Surface Winds 🔥 Heat Wave ❄ Cold wave 🌫 Fog | <ul style="list-style-type: none"> 🟢 NO WARNING 🟡 WATCH(BE UPDATED) 🟠 ALERT (BE PREPARED) 🔴 WARNING (TAKE ACTION) |
|--|---|---|



SUBDIVISIONWISE WEATHER WARNING FOR DAY 3
(3-8-2023)



- | | | |
|--|---|---|
| <ul style="list-style-type: none"> ☼ Heavy Rain ❄ Heavy Snow ⚡ Thunderstorms & Lightning ☁ Hailstorm | <ul style="list-style-type: none"> ☁ Dust Storm 🌪 Strong Surface Winds 🔥 Heat Wave ❄ Cold wave 🌫 Fog | <ul style="list-style-type: none"> 🟢 NO WARNING 🟡 WATCH(BE UPDATED) 🟠 ALERT (BE PREPARED) 🔴 WARNING (TAKE ACTION) |
|--|---|---|

Spatial rainfall distribution: Isolated: <25%, A few: 26-50%, Many: 51-75%, Most: 76-100%
Rainfall amount (mm): Heavy rain: 64.5 – 115.5, Very heavy rain: 115.6 – 204.4, Extremely heavy rain: 204.5 or more.